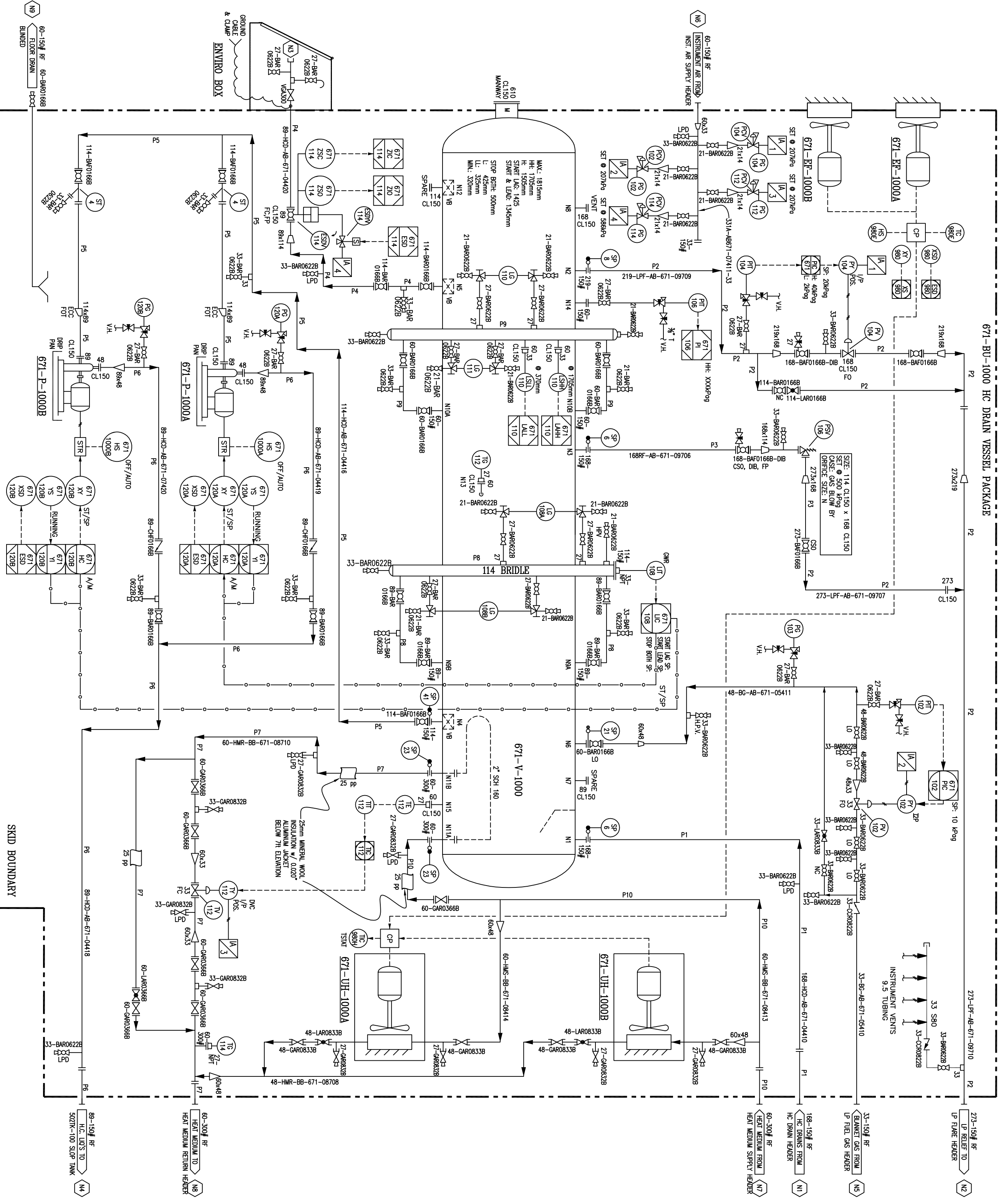


671-V-1000
CLOSED HC DRAIN VESSEL
 SIZE: 2134 D x 5150 H
 DESIGN: 300 kPa/PV @ -20/204°C
 COLL: 1886 kPa @ -20/204°C

671-P-1000A/B
HC DRAIN PUMPS
 MODEL: BENTON PUMP
 RATED AT: 20 m³/h
 SPEED: 1800 RPM
 MOTOR MODEL: TEC MOTOR
 RATING: (1.12kW) CLASS 1, ZONE 2

671-UH-1000A/B
BUILDING HEATERS
 MODEL: BENTON HEATER
 RATED AT: 20 m³/h
 SPEED: 1800 RPM
 MOTOR MODEL: TEC MOTOR
 RATING: (0.37kW) CLASS 1, ZONE 1
 (0.7 kW) THERMOSONI

671-EF-1000A/B
EXHAUST FAN
 MODEL: BENTON FAN
 CAPACITY: 500 CMH
 EXHAUST FAN MOTOR
 RATING: 0.187 kW, 208V/1PH/60Hz
 CLASS 1, ZONE 1



TITLE: HYDROCARBON DRAIN VESSEL PACKAGE

MOSS FABRICATION LTD.
 CALGARY
 mossfab@mossfabrication.com ALBERTA

PROCESS AND INSTRUMENTATION DIAGRAM

SIZE:	DATE:	DRAWN:	CLIENT:
JOB No.:	SCALE:	PROJ. ENGR:	DRAWING No.:
			REV: