

P-214
CHARGE PUMP
 MANUFACTURER: EAGE
 MODEL: 4-100-M
 CAPACITY: 12 m³/h (52.8 USGPM)
 SHUT OFF P: 320 kPa (46.4 PSI)
 TYPE: 3 Ph/480 V/60 Hz

P-215
CHEMICAL INJECTION PUMP
 TYPE: 1 Ph/115 V/60 Hz
 REED CHECK: 0.265 GPa
 DISCHARGE PRESSURE: 125 PSI
 PROMINENT CHEMICALS: 2023
 MAX. STROKE: 1.25"

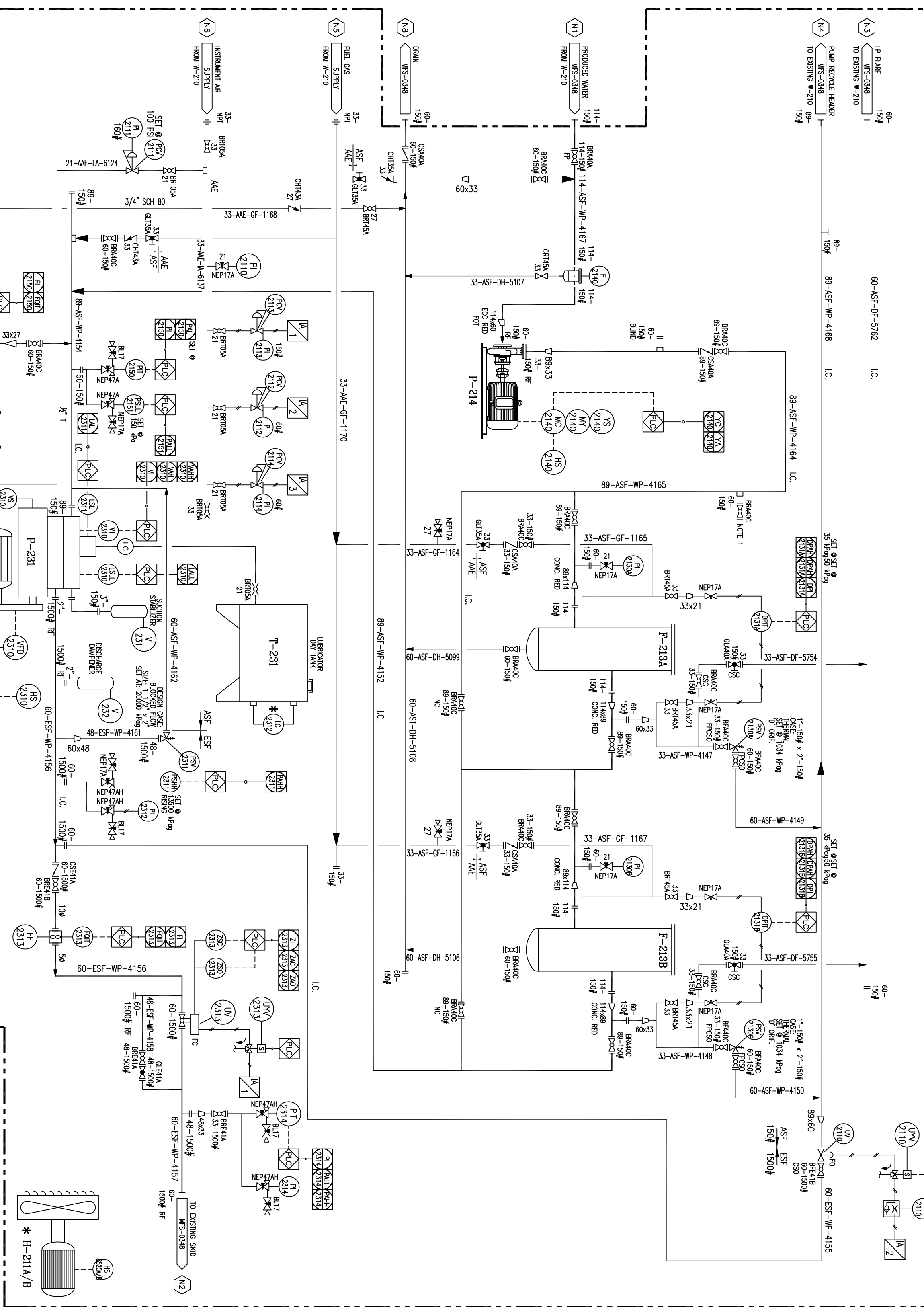
P-231
WATER INJECTION PUMP
 MAKE: NATIONAL TRITEX
 MODEL: BEAR BD 173M
 RINGS: 2116
 FLOW RATE: 6.4 m³/h (28 GPM)
 MOTOR MODEL: T80
 POWER: 8000 RPM
 TYPE: 3 Ph/480 V/60 Hz
 S.F.: 1.15 INSUL CLASS F - VFD RATED
 LUBRICATION: w/ MURPHY LEVEL CONTROL

P-241
DRAIN PUMP
 MAKE: WUDON
 MODEL: 17-7
 MAX. FLOW PER MINUTE: 15 GPM
 MAX. SOLID HANDLING: 1/8"
 MAX. DISCHARGE PRESSURE: 125 PSI
 DRIVE TYPE: PNEUMATIC

F-213A/B
FILTERS
 MAKE: PECO
 MODEL: 552-340-3155C-4
 SIZE: 10 MICRON FOR F213A
 SIZE: 10 MICRON FOR F213B
 BAG TYPE

H-211A/B
ELECTRIC UNIT HEATER
 VOLTAGE: 480/3/60
 MANUFACTURER: HAYLOK
 MODEL: 75S
 REMOTE THERMOSTAT

(W-211) WATER INJECTION PACKAGE



MOSS FABRICATION LTD.
 CALGARY
 mossfab@mossfabrication.com
 ALBERTA

WATER INJECTION PACKAGE

PROCESS AND INSTRUMENTATION DIAGRAM

TITLE:	PROCESS AND INSTRUMENTATION DIAGRAM			
SIZE:	DATE:	DRAWN:	CLIENT:	REV:
JOB No.:	SCALE:	PROJ. ENGR:	DRAWING No.:	